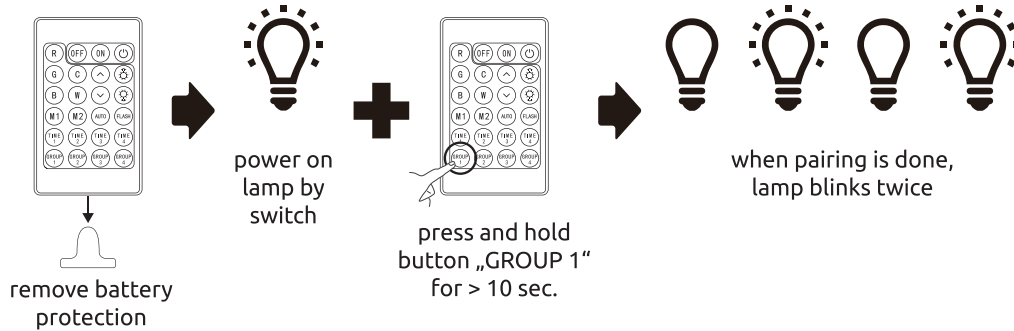


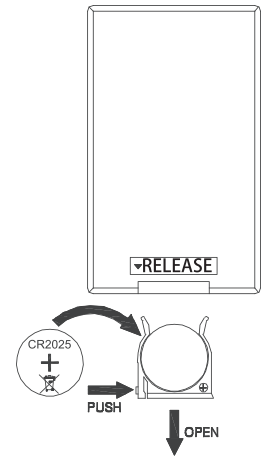
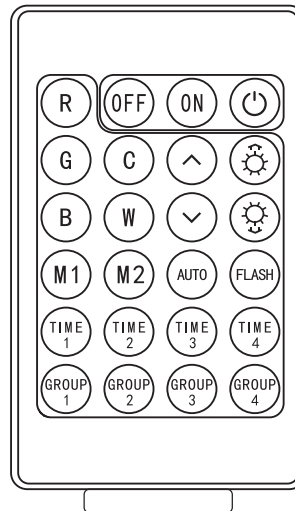


Remote Control - Pairing Process



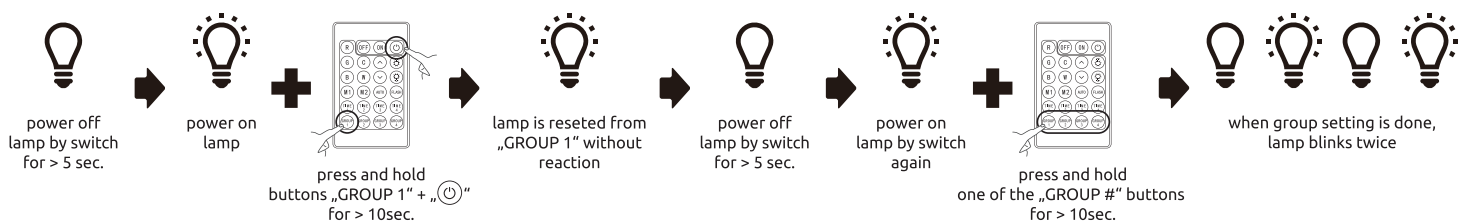
ON/OFF	Green	Red
Blue	Lumen+ Lumen-	3000K-6500K Kelvin+ Kelvin-
6500K	3000K	RGB color change
switch for modes	Time one hour, two hour, three hour, four hour	

Frequency Bandwidth	Maximal radiation transmitting power
2400-2483.5MHZ	<7dBm



1xLi-metal CR2025 150mAh 3.0V incl.

Reset Remote Control and Set Another Group



smart APP control

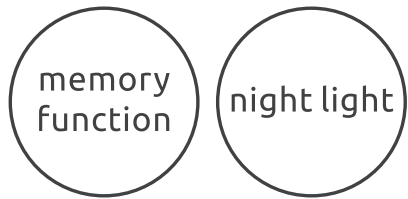
free APP

compatible with
Alexa

Powered By
tuya

compatible with
Google Assistant

Intelligence
Inside



**Download
Tuya App:**



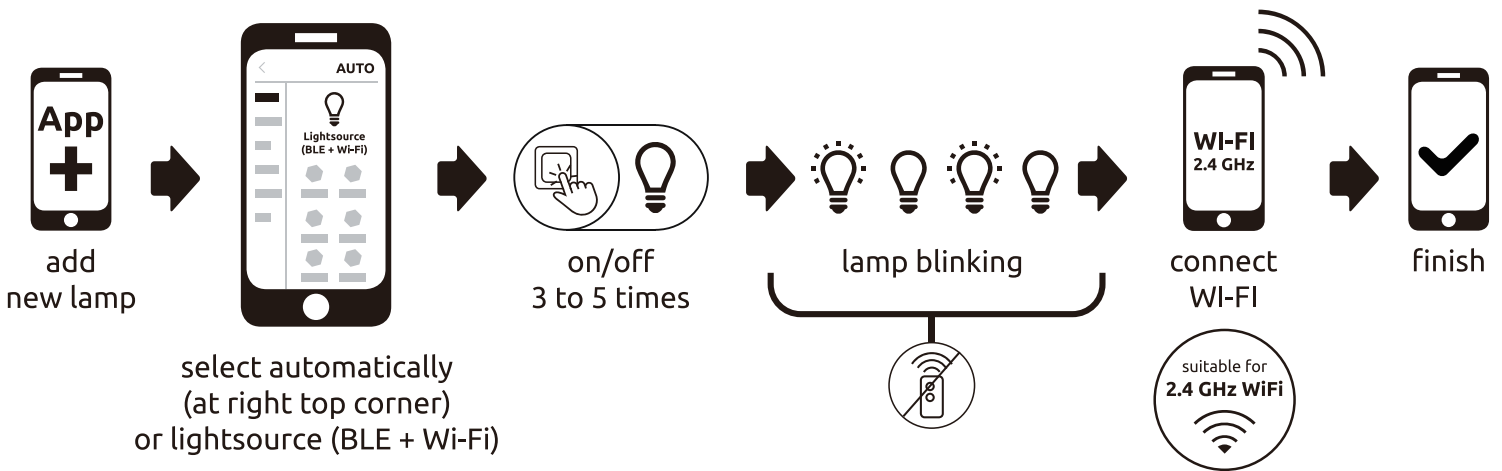
**Get latest
manual:**



**Functional
Video:**



Tuya App - Pairing Process



Customer support contact information including a person thinking icon, a clock icon, and a headset icon.

08:00 to 16:00
(Monday to Friday)

+43 (0)4253 320 50 083
(Please consider, your telephone operator's usual charges for calls to Austria will apply.)

Globo Handels GmbH
Gewerbestraße 3
9184 St. Peter
AUSTRIA

office@globo-lighting.com
www.globo-lighting.com



GB

Note: Environmental Protection and Disposal

Consumers are legally obligated to properly dispose of electronic devices, lamps, and batteries at the end of their lifespan. They can be returned free of charge at designated public collection points or through retailers. The deletion of personal data is the consumer's responsibility. Light bulbs and batteries that can be safely removed and are not permanently installed must be separated for separate disposal. The details of legally compliant disposal are governed by regional legislation.

The symbol of a crossed-out waste bin indicates that electronic devices and batteries must never be disposed of in household waste after their lifespan. Symbols placed below the waste bin indicate the possible presence of certain substances (lead = Pb, mercury = Hg, cadmium = Cd). This separation is necessary because batteries and electronic devices contain both valuable resources and substances that are harmful to humans and the environment.

By recycling, collecting, and reusing batteries and suitable electronic devices, you contribute to the preservation and protection of the environment and human health.



English - (GB) Used batteries must not be disposed of through household garbage, since they might contain toxic elements and heavy metals that can be harmful to the environment and human health. Return empty batteries to an appropriate recycling facility.

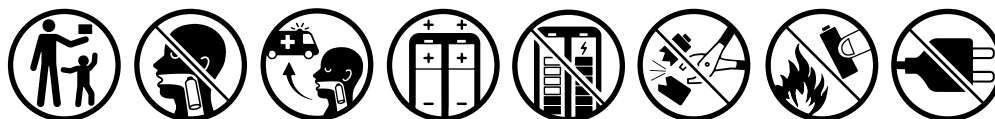
BATTERY DATA

CR2025 Li-Mn Battery*incl

*Manufacturer: DONGGUAN TIANQIU ENTERPRISE CO., LTD
Address: TIANQIU INDUSTRIAL PARK, XINJI INDUSTRIAL ZONE,
MACHONGTOWN, DONGGUAN, GUANGDONG, P.R. CHINA
Model: CR2025 3.0V 150mAh



SAFETY INSTRUCTIONS



08:00 to 16:00

(Monday to Friday)



+43 (0)4253 320 50 083

(Please consider, your telephone operator's usual charges for calls to Austria will apply.)

Globo Handels GmbH
Gewerbestraße 3
9184 St. Peter
AUSTRIA

office@globo-lighting.com
www.globo-lighting.com